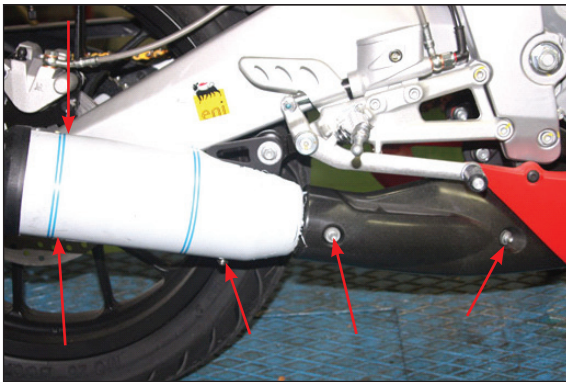


ISTRUZIONI DI MONTAGGIO / FITTING INSTRUCTIONS

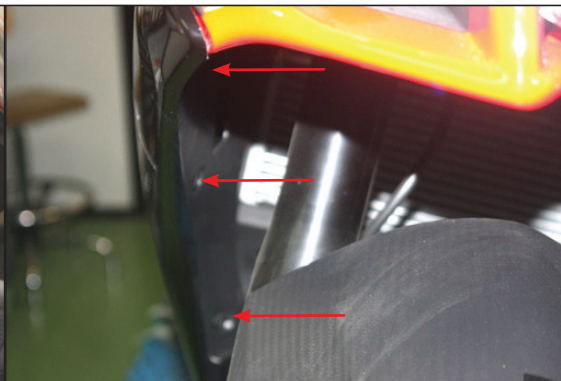
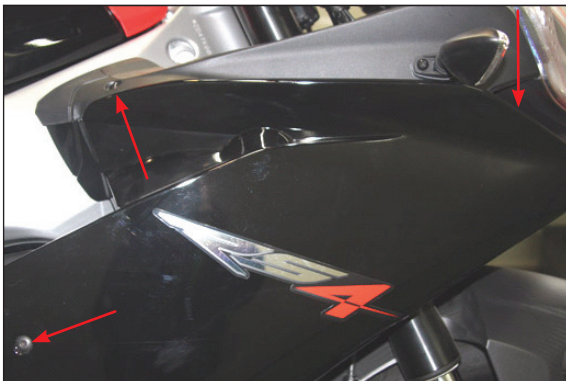
SMONTAGGIO KIT ORIGINALE / OE EXHAUST REMOVAL INSTRUCTIONS



Rimuovere le protezioni paracalore
Remove OE heat shields



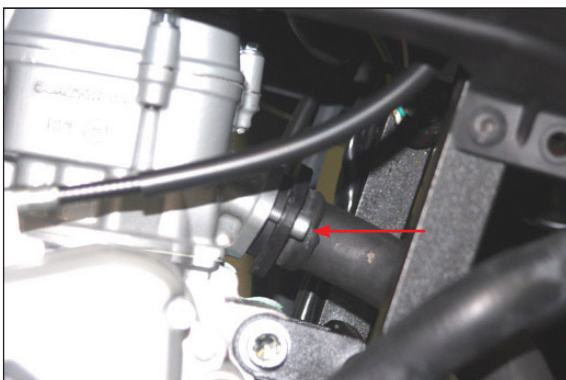
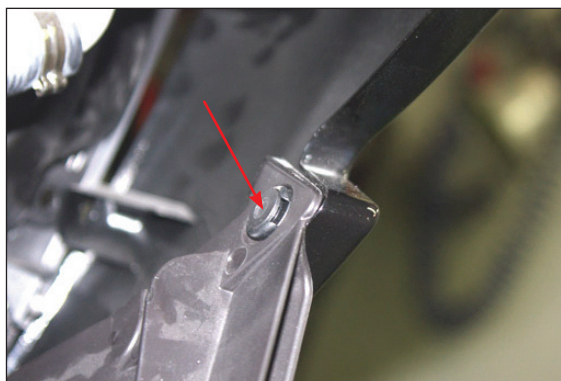
Svitare le viti indicate
Unscrew the screws shown above



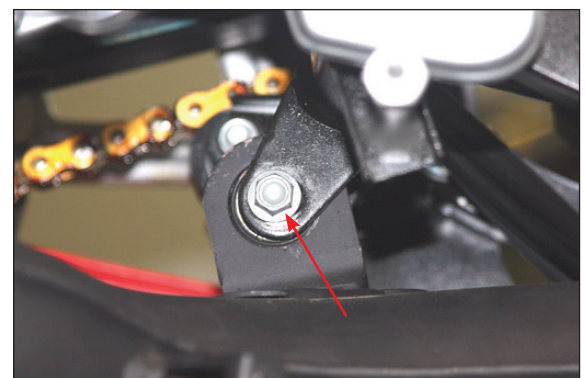
Svitare le viti indicate
Unscrew the screws shown above

Svitare le viti indicate
e rimuovere le carene
laterali

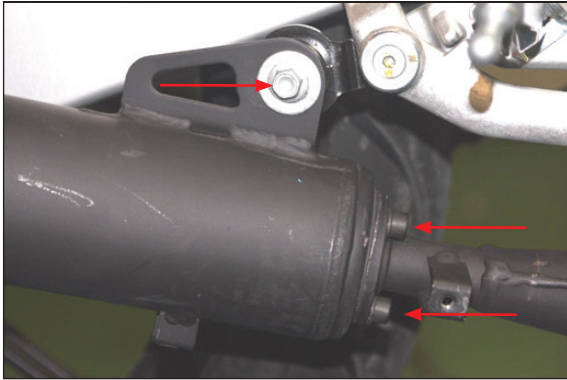
Unscrew the screws
shown above and
remove side fairings



Rimuovere le 2 viti che fissano il collettore al cilindro
Remove the screws fixing the header to the cylinder



Svitare la vite indicata
Unscrew the screw shown above

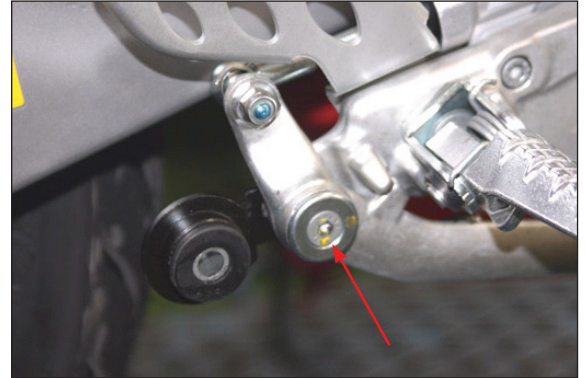


Svitare la vite che sorregge il terminale e le 3 viti sulla flangia dello scarico

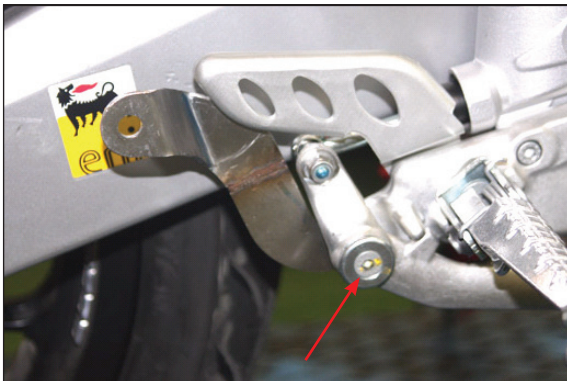
Unscrew the screws securing the silencer to the frame and to the muffler

Rimuovere la vite indicata e sfilare l'attacco dello scarico originale

Remove the screw shown above and remove the OE silencer mounting bracket



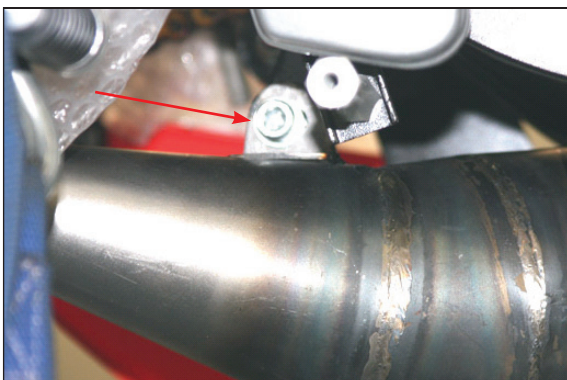
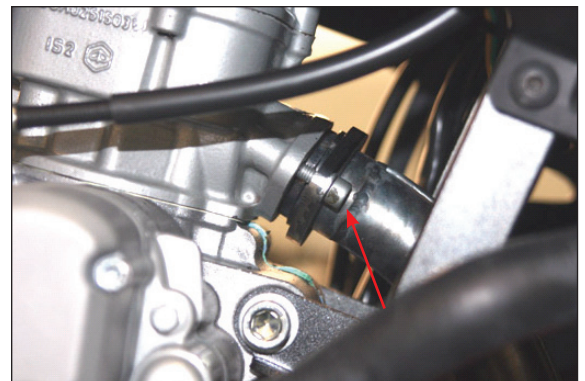
MONTAGGIO SCARICO MALOSSI / MALOSSI EXHAUST FITTING INSTRUCTIONS



Montare la staffa fornita nel kit al posto dell'originale utilizzando la bulloneria originale

Fit the mounting bracket given in the fitting kit as shown above, using OE hardware

Montare l'espansione Malossi e fissare il collettore al cilindro utilizzando le viti originali
Fit Malossi muffler and secure the header using OE hardware

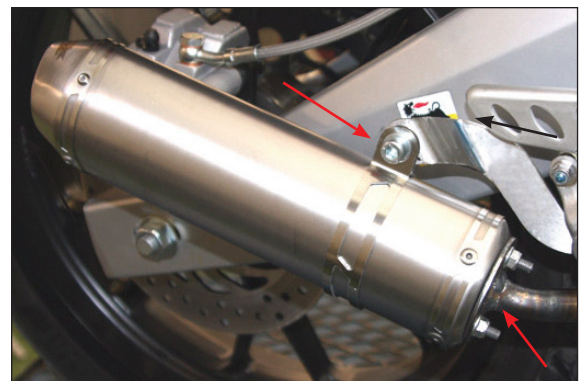


Agganciare l'espansione Malossi nell'attacco originale usando la bulloneria fornita nel kit

Secure the muffler to the fixing point using the hardware given in the fitting kit

Montare il terminale nella flangia e avvitarlo con la bulloneria Malossi, agganciare la fascetta sulla staffa e serrare il tutto

Fit Malossi silencer to the flange in the muffler and secure it using the screws and the mounting clamp given in the fitting kit, as shown above



N.B. : Controllare il serraggio di tutte le viti

NOTE : Check all the screws to be properly tightened